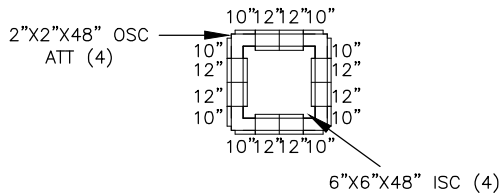


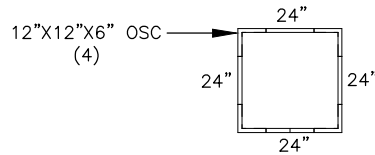
PRECISE FORMS, INC

CUSTOMER:		STANDARD 3X3X4	
DRAWN BY:	JIM CRAIN	DATE:	8-27-19
DRAWING DESCRIPTION:		DRAWING NO:	
3'X3'X4' WITH 6" WALLS AND BASE MONOLITHIC & RISER POUR		SV-3X3X4	

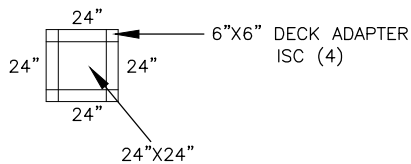
PLAN VIEW OF 48" TALL WALL FORMS



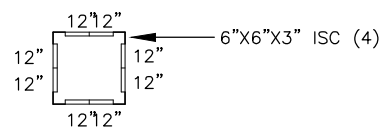
PLAN VIEW OF 6" TALL EXTENSIONS PLACED ON TOP OF THE JACKET FORMS FOR THE MONOLITHIC POUR



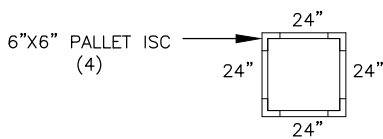
PLAN VIEW OF DECK ADAPTERS AND DECK FORM FOR THE MONOLITHIC POUR



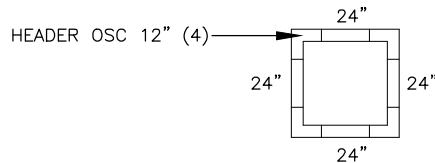
PLAN VIEW OF 3" TALL EXTENSIONS TO BE PLACED ON TOP OF THE CORE FORMS OPPOSITE THE HEADER FORMS FOR THE RISER POUR



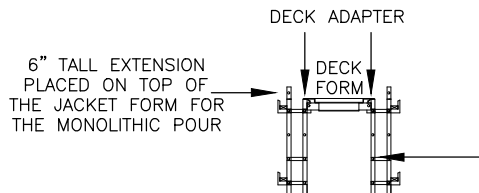
PLAN VIEW OF PALLET LAYOUT TO BE PLACED AGAINST THE FACE OF THE CORE FORM



PLAN VIEW OF HEADER LAYOUT TO BE PLACED ON TOP OF THE JACKET FORMS OPPOSITE THE 3" EXTENSIONS



VERTICAL CUT VIEW OF FORM SET UP FOR THE MONOLITHIC POUR



VERTICAL CUT VIEW OF FORM SET UP FOR THE RISER POUR

3" TALL EXTENSION PLACED ON TOP OF THE CORE FORMS OPPOSITE THE HEADER FORM FOR THE RISER POUR

